

PANTONE® fashion color report fall 2007

Carafe
PANTONE® 19-1116

Burnt Ochre
PANTONE 18-1354

Chili Pepper
PANTONE 19-1557

Stargazer
PANTONE 19-4316

Shale Green
PANTONE 16-6116

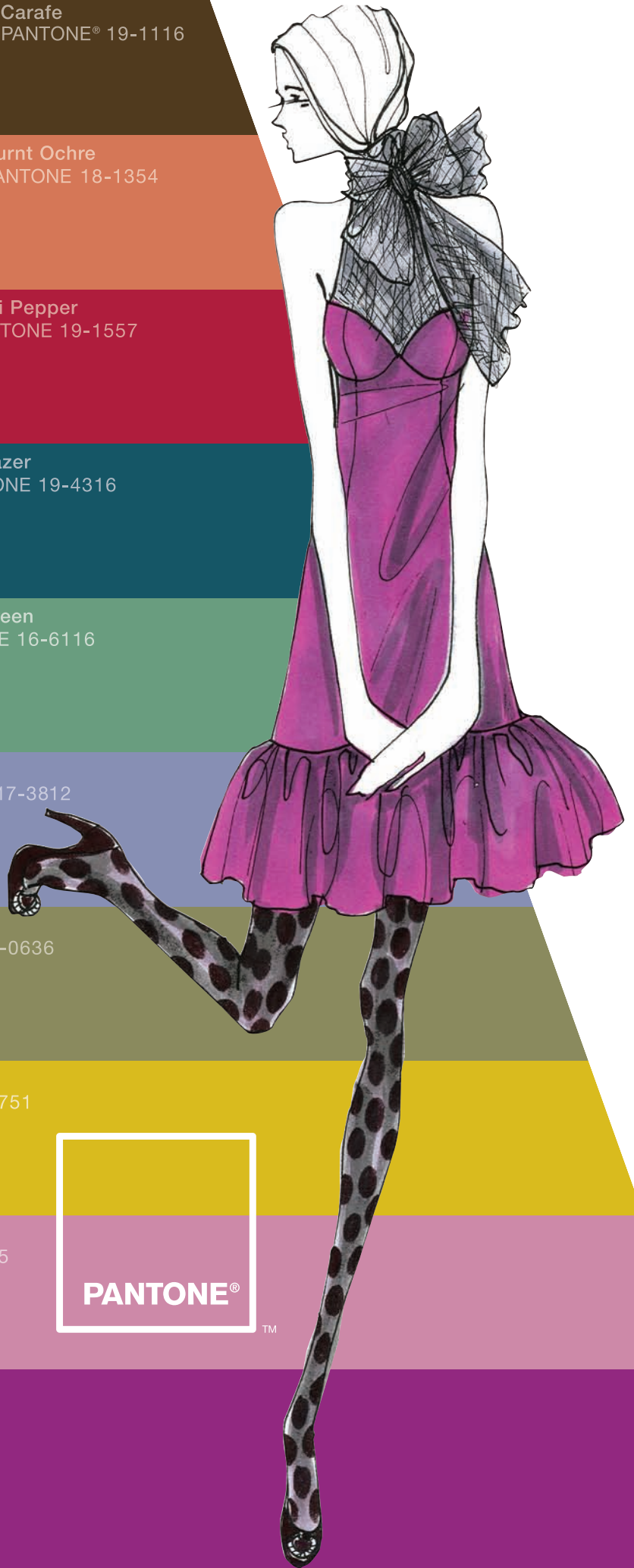
Dusk
PANTONE 17-3812

Green Moss
PANTONE 17-0636

Lemon Curry
PANTONE 15-0751

Cashmere Rose
PANTONE 16-2215

Purple Wine
PANTONE 18-2929





PANTONE® fashion color report fall 2007

Complex and exotic describe the intriguingly unusual and inviting color palette for fall '07. The traditional neutral shades expected for autumn have been replaced this season with rich, nuanced hues, offering more opportunity for creativity with interesting and unexpected color combinations.

Spicy **Chili Pepper** and exotic **Lemon Curry** stimulate the taste buds, entice the senses and enliven any wardrobe. **Purple Wine**, the ultimate expression of creativity, marries purple and wine, broadening the appeal of purple for fashion. The violet undertones of **Dusk** give gray a whole new dimension, making this fall's neutral much more desirable.

Carafe, a deep, espresso brown, adds contrast to the palette, providing a rich alternative to the usual black or charcoal. Sumptuous **Cashmere Rose** is not only the perfect complement to any of fall's colors, but also flatters any complexion.

Many seasons have paid homage to nature, and fall '07 is no exception. **Shale Green** takes the shade in a murky, blue/gray direction, while foliage-inspired **Green Moss** goes to the yellow side. Earthy **Burnt Ochre** is this autumn's orange and sophisticated **Stargazer** continues the trend of turquoise, but with a deeper intensity.

“Designers find inspiration in a variety of places, but one thing they all have in common this season is a rich, complex color palette to stimulate creativity,” said Leatrice Eiseman, executive director of the Pantone Color Institute®. “Nuanced colors with subtle undertones enhance the ever-present neutrals and allow for clever and extraordinary color combinations. Pairing designer pieces with mainstream staples has become a way of life, and color adds an important dimension for expressing one's unique sense of style.”



Tracy Reese

PROMINENT COLORS

Black, Navy, Magenta, Rose Carthane,
Hershey, Apple, Orchid, Cloudy Gray

INSPIRATION

Interiors

SIGNATURE COLOR

Rose Carthane

COLOR PHILOSOPHY

Use Black as an accessory
and layer rich and vibrant
color around it



Purple Wine
PANTONE 18-2929



**Michael Vollbracht
for Bill Blass**

PROMINENT COLORS

Golden Yellow and Parrot Green mixed with Dull Maroon; also this season's Yellows, Golds and Mints mixed with Gray and Brown

INSPIRATION

Menswear fabrics mixed with brocades – very Blass

SIGNATURE COLOR

I don't have one

COLOR PHILOSOPHY

Muted mixed with shock, such as Gray with Red



Lemon Curry
PANTONE 15-0751



Catherine Malandrino

PROMINENT COLORS

Sleek Black, Glossy White, Metal Gray,
Bold Magenta, Violet and Petroleum

INSPIRATION

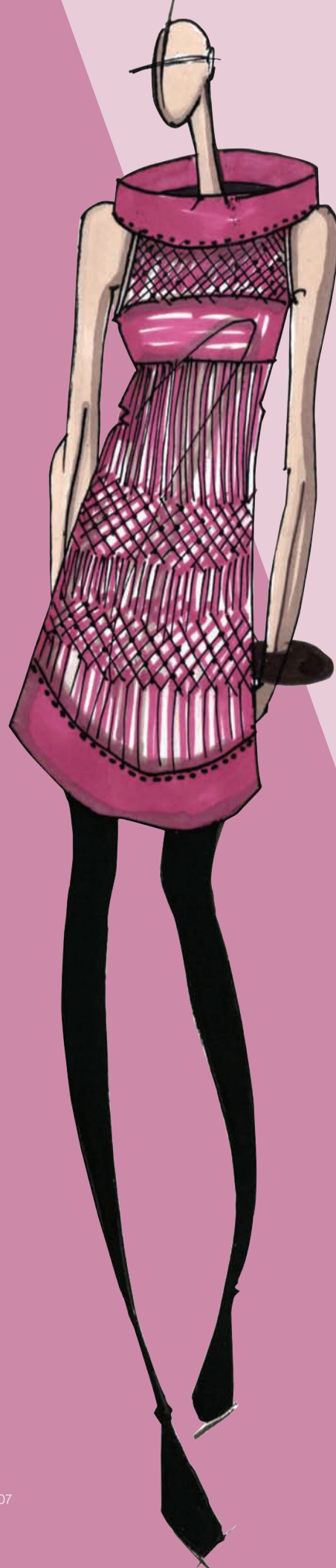
Schiaparelli's Shocking Pink meets
carefree Zizi Jeanmaire

SIGNATURE COLOR

Magenta

COLOR PHILOSOPHY

Bold color block



Cashmere Rose
PANTONE 16-2215



Douglas Hannant

PROMINENT COLORS

Blueberry, Muted Raspberry, Wine, Lavender, Sassafras, many shades of Black

INSPIRATION

Toned-down sophisticated Berry colors; references from the Renaissance

SIGNATURE COLOR

Blueberry

COLOR PHILOSOPHY

Rich, sophisticated and quiet monotone



Dusk
PANTONE 17-3812



Zac Posen

PROMINENT COLORS

Black, White, Nude, Lipstick, Deep Plum, Cherry, Emerald and stealthy metals like Mercury and Bronze

INSPIRATION

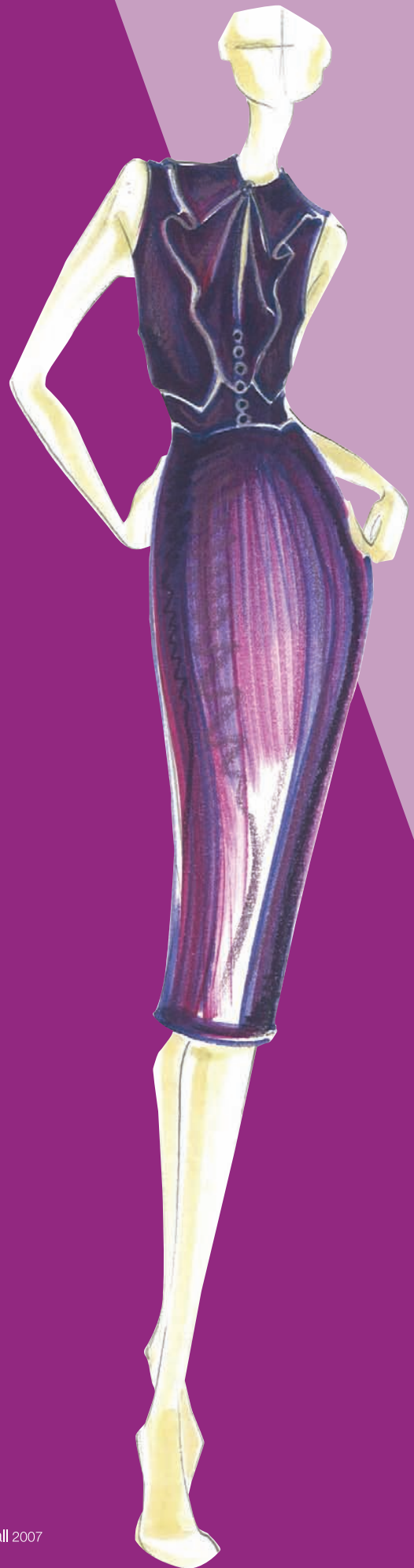
Irises

SIGNATURE COLOR

Deep Plum tones

COLOR PHILOSOPHY

Clean, charming and strong femininity



Purple Wine
PANTONE 18-2929



Naeem Khan

PROMINENT COLORS

Jaiper Ruby, Antique Gold and Black

INSPIRATION

Dreamgirls, Yves Saint Laurent, the '60s

SIGNATURE COLOR

Antique Gold and Black

COLOR PHILOSOPHY

Jewel tones mixed with antique metallics

Green Moss
PANTONE 17-0636





Peter Som

PROMINENT COLORS

Elegant neutrals such as Midnight Navy, Flannel Gray and Milk Chocolate mixed with shots of acid brights like Fuchsia and Chartreuse, and Black with White

INSPIRATION

Lady's Slipper orchids, John Singer Sargent paintings and the construction of clothes

SIGNATURE COLOR

Raspberry Fuchsia

COLOR PHILOSOPHY

Layering of color and fabric to create nuance and texture



Cashmere Rose
PANTONE 16-2215



Y & Kei

PROMINENT COLORS

Amethyst, Azure Blue, Graphite,
Dusty Rose, Cognac, Flour White,
Carbon, Oxidized Silver

INSPIRATION

Federation Square in Melbourne, Australia

SIGNATURE COLOR

Light-colored Graphite

COLOR PHILOSOPHY

Neutral tones such as Graphite
that will be accentuated by Azure Blue,
Cognac and Amethyst



Dusk
PANTONE 17-3812



Reem Acra

PROMINENT COLORS

Jewel tones like Emerald, Ruby and Sapphire accented with my signature Gold

INSPIRATION

A recent exhibit at the Metropolitan Museum of Art in New York "Glitter and Doom: German Portraits of the 1920s" – I was taken by the modernity and glamorous decadence of society at that time

SIGNATURE COLOR

Gold

COLOR PHILOSOPHY

Use layers to express your style; experiment with colors as part of the creative process



Stargazer
PANTONE 19-4316

Cynthia Steffe Studio

PROMINENT COLORS

Shades of Gray to Black accented with Deep Plums and Purples, Magentas and Greens; Rich Blues from Turquoise to Indigo are also key this season

INSPIRATION

Menswear details and fabrics in a sexy, romantic mood

SIGNATURE COLOR

Gray and Plums

COLOR PHILOSOPHY

Rich tones against graphic
Black and Ivory



Purple Wine
PANTONE 18-2929



Nanette Lepore

PROMINENT COLORS

Mixed shades of Deep Plum and Violet, Bronze and Charcoal, Charcoal and Deep Plum, Purple Magic, Crown Jewel, Toffee, Steel Gray

INSPIRATION

I've been decorating my new house and was inspired by rich and warm tones

SIGNATURE COLOR

Plum and Bronze

COLOR PHILOSOPHY

Sumptuous, curl-up luxury



Burnt Ochre
PANTONE 18-1354



Gustavo Arango

PROMINENT COLORS

Jewel tones such as Emerald, Sapphire and Ruby, as well as deep, rich colors like Plum and Charcoal

INSPIRATION

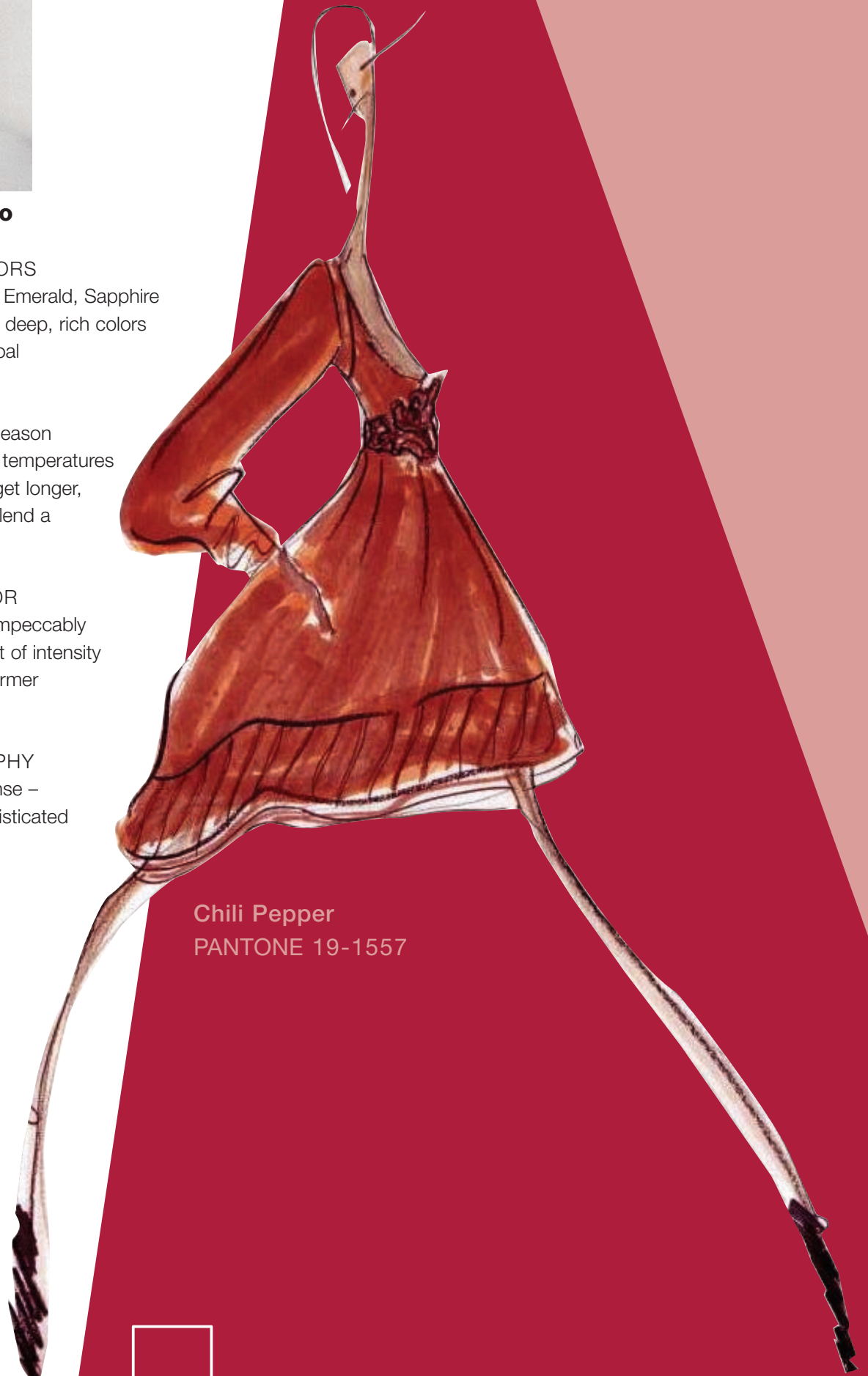
The intensity of the season inspired me – as the temperatures cool and the nights get longer, deeper, richer tones lend a sense of warmth

SIGNATURE COLOR

Black – it is always impeccably stylish and adds a bit of intensity when paired with warmer jewel tones

COLOR PHILOSOPHY

Dark, deep and intense – an elegant and sophisticated palette



Chili Pepper
PANTONE 19-1557



Carmen Marc Valvo

PROMINENT COLORS

Warm neutrals like Birch, Teak and Cool Grays juxtaposed with shots of Purple and Moss

INSPIRATION

Mid-century modern furniture and interior design

SIGNATURE COLOR

Stainless Steel

COLOR PHILOSOPHY

Neutrals with brights



Green Moss
PANTONE 17-0636



Cynthia Rowley

PROMINENT COLORS

Black, Gray, Teal, Plum, Gold and Silver

INSPIRATION

The aurora borealis



Shale Green
PANTONE 16-6116



Jeff Mahshie for Chaiken

PROMINENT COLORS

Black, Gray, Ivory, Forest, Brown, Navy, Aubergine, Violet

INSPIRATION

The evolution of the dark palette of last fall combined with the bold brights from spring

SIGNATURE COLOR

Gray

COLOR PHILOSOPHY

New darks (Charcoal, Aubergine, Forest and Brown) lit with color



Stargazer
PANTONE 19-4316



Kai Milla

PROMINENT COLORS

Neutrals such as Espresso Brown and Charcoal Gray with a warm undertone accented by Deep Moss Green and Deep Bordeaux Red; My metal finish of choice this season is a darkened Pewter

INSPIRATION

Imperfect perfection and an embrace of darkness without Black, and, most of all, my husband's touch

SIGNATURE COLOR

Warm Charcoal Gray

COLOR PHILOSOPHY

Finding "The Lighter Side of Darkness"

Carafe

PANTONE 19-1116





PANTONE® fashion **must-haves** fall 2007

Laura Poretzky for Abaeté **A great Black coatdress**

Akiko Ogawa **Oversized coats and mini dresses**

in Black, Ebony and Metallic Gold

Michael Vollbracht for Bill Blass **A Black dinner dress**

Carmen Marc Valvo **A fun fur in Purple**

Catherine Malandrino **Magenta cashmere knee dress**

Jeff Mahshie for Chaiken **A long slim skirt in**

something dark like Black, Charcoal or Forest

Cynthia Steffe Studio **A parka in Techno Silver and Gray**

Douglas Hannant **Silk embroidered basket-weave coat**

with cotton/cashmere cuffs and borders in

Blueberry and Black

Erin Fetherston **My butterfly skirted coat in Gray wool**

with Silver Lurex® highlights – it is an amazing piece

in a beautiful fabric with a stunning volume

Jeremy Laing **Dresses in Cobalt, Aquamarine, Garnet,**

Fools' Gold, Coal, Hematite

Lyn Devon **Our oversized cashmere coat in Cognac and Ink**

Naeem Khan **Antique Gold cowl-back cocktail dress**

Nanette Lepore **A drapery shift dress in deep shades of Violet**

Peter Som **Cotton taffeta shirtdress in Iridescent Dark Fuchsia**

Reem Acra **Flowing pants with a high waist**

Tracy Reese **Shift with Black tulle and necktie in Magenta**

Y & Kei **A silk color-block and pleated cocktail dress**

Yigal Azrouël **Night wool/cashmere cable-knit sweater with**

patent trim and brushed metal zips

Zac Posen **A sporty couture parka in Emerald canvas**

and Black parachute



Designers choose the most
universally appealing colors 2007

Laura Poretzky for Abaeté **Navy**

Akiko Ogawa **Black Ink and Barberry**

Betsey Johnson **Black because it's timeliness and great**

Michael Vollbracht for Bill Blass **Black**

Carmen Marc Valvo **Titanium gives the skin a warm glow**

Catherine Malandrino **Magenta – it enhances all different skin tones and complements every color**

Jeff Mahshie for Chaiken **Gray is as easy to wear as Black and it is still chic without being intimidating**

Charlotte Ronson **Navy – when treated as a neutral, it goes with everything**

Cynthia Steffe Studio **Ivory and Black – they're seasonless and universally flattering**

Douglas Hannant **Blueberry – it has a rich undertone of Purple**

Erin Fetherston **I think Black really is the universal color and also a great choice for fall/winter – it's sophisticated, flattering, and can be both discreet and stunning at once**

Jeremy Laing **Coal because it's Black**

Kai Milla **Red Bordeaux – when it's surrounded by a deep neutral palette, it becomes very sensual**

Lyn Devon **Vintage Purple – it flatters every skin tone and enriches neutral ensembles**

Naeem Khan **Antique Gold and Black – Gold is universally loved and Black is basic**

Nanette Lepore **Plum – it's the ultimate in luxury**

Reem Acra **Emerald Green can complement so many skin tones**

Tracy Reese **Black**

Kati Stern for Venexiana **Black because it's sleek, it's chic, and it was yesterday, will be tomorrow and is entirely today**

Y & Kei **Neutral tones such as Graphite that can work for everyone with hints of color that will bring out a person's individuality**

Yigal Azrouël **Eclipse Blue – it's a color that works on many skin tones; it's a deep yet rich color**

Zac Posen **Mercury and Bronze because they are rich and sumptuous**



fashion **COLOR REPORT** fall 2007

PANTONE Fashion Color Report

Vol. 27, February 2007.

Pantone, Inc., 590 Commerce Blvd.,
Carlstadt, NJ 07072-3098.

Tel: 201.935.5500

Web site: www.pantone.com.

PANTONE Colors displayed here
may not match PANTONE-identified
standards. Consult current PANTONE
for fashion and home color system
publications for accurate color.

PANTONE® and other Pantone, Inc.
trademarks are the property of
Pantone, Inc. All other trademarks are
the property of their respective
owners. © Pantone, Inc., 2007.

All rights reserved.

Design by John De Francesco

PANTONE® fashion colors fall 2007 c-m-y-k

Carafe
PANTONE® 19-1116
c 56 m 68 y 93 k 47

Burnt Ochre
PANTONE 18-1354
c 15 m 64 y 70 k 0

Chili Pepper
PANTONE 19-1557
c 21 m 100 y 72 k 13

Stargazer
PANTONE 19-4316
c 85 m 46 y 38 k 35

Shale Green
PANTONE 16-6116
c 62 m 22 y 58 k 3

Dusk
PANTONE 17-3812
c 50 m 40 y 13 k 0

Green Moss
PANTONE 17-0636
c 48 m 36 y 72 k 7

Lemon Curry
PANTONE 15-0751
c 12 m 19 y 100 k 5

Cashmere Rose
PANTONE 16-2215
c 18 m 53 y 14 k 0

Purple Wine
PANTONE 18-2929
c 48 m 98 y 11 k 4